

A woman with dark hair, wearing a grey t-shirt, is captured in a focused moment of a table tennis match. She is holding a red paddle and looking intently at the ball. The background is a teal-colored wall.

Area Update National Council

22nd April 2023



tabletennisengland.co.uk



IMPLEMENTATION OF:

TABLE TENNIS WILL BE A THRIVING COMMUNITY - A SPORT FOR EVERYONE WITH NO BARRIERS TO TAKING PART

Working in Partnership

Establish the Area network (Andy)

- Establish a Local Organising Group (LOG) in each operating area all with a measurable delivery plan
- Develop insight and data modelling to inform the 'state of play' (impact) in each area

Growing a Grass Roots Workforce

Establish a programme of training for officials (Andy)

- Produce an area audit identifying current qualifications held by officials, and where gaps exist
- An annual education programme will be published aligned to the LOG's and the competition review

Participation with a Purpose

Increase the number of Under 9's playing (Andy)

- All participation activity will be focused on primary aged young people and integrated into a club, regular activity and/or competition.
- All participation activity will have a direct link to increasing membership

Scale Ping!

- Increase the number of Ping Pong Parlours
- Introduce 'paid for' activity (i.e. coaching) in Parlours alongside 'Play as you Go' access
- Trial opportunities to secure data and revenue from Ping Parlours and outdoor venues
- Develop a compelling proposition to secure public/private investment

Competition for All

Implement the Competition Review (Andy)

- Detail to be added post BoD meeting

Scope new competition formats

- Scope new competition opportunities targeted mainly at recreational players – such formats to include doubles, graded tournaments
- Test several events and gather feedback from players

IMPLEMENTATION OF:

CULTURE CHANGE ACROSS THE PATHWAY THAT INSPIRES WORLD CLASS PERFORMANCES AND MEDAL SUCCESS

World Class Pathway

Establish the 'Start, Potential , Podium' structure (Gavin)

- Develop a National Coaching Curriculum across the Pathway and Performance programmes
- Publish Standards for players entering our Pathway environment
- Publish Standards for players entering our Performance environment

Show progressive improvement at junior and senior level (Gavin)

- A minimum of two English players achieve GB 'Academy' status
- All players in the 'Start' programme have increased their world ranking
- Three senior players are inside the top 80 in the world, including one inside the top 20
- Medal winning performances are achieved at European Youth level

World Class Behaviours

Revise our coach education and learning programme (Gavin)

- Redesign our coach education where the focus is on place-based learning as opposed to qualifications

World Class Environments

Establish Pathway Development Centres (Gavin)

- Establish a minimum of three PDCs each providing a minimum 15 hours a week training to young players

Develop a 'home' for table tennis (Adrian)

- Progress discussions with possible host facilities
- Confirm our preferred partner
- Develop the business case to secure public investment to create an elite training centre

Local Organising Groups - Overview

Areas are replacing the Regions, which will be discontinued after the Inter Regional Finals

We will move from 10 Regions into 7 Areas

Local Organising Groups will be established in each Area and be made up of local people from the table tennis community and external partners and supporters of table tennis

An Area Forum will be established which brings together the Chairs from the seven Local Organising Groups

Local Organising Groups will be led and steered by the Area Managers, who started with TTE on 1st February 2023. They will be responsible for developing and implementing their Area plan

Each Area, through the Local Organising Group will have a budget to deliver on the priorities of that Area and support the implementation of Table Tennis United

Local Organising Groups - Priorities



Principles in establishing Local Delivery Plans



How do we know?

- We need to establish determinants of success – how do we know we are succeeding? This has to be factored in at the beginning of a LDP.
- Key Results underpin what success looks like – from there those measures will be created for the Area Managers and used to support the Local Delivery Plans

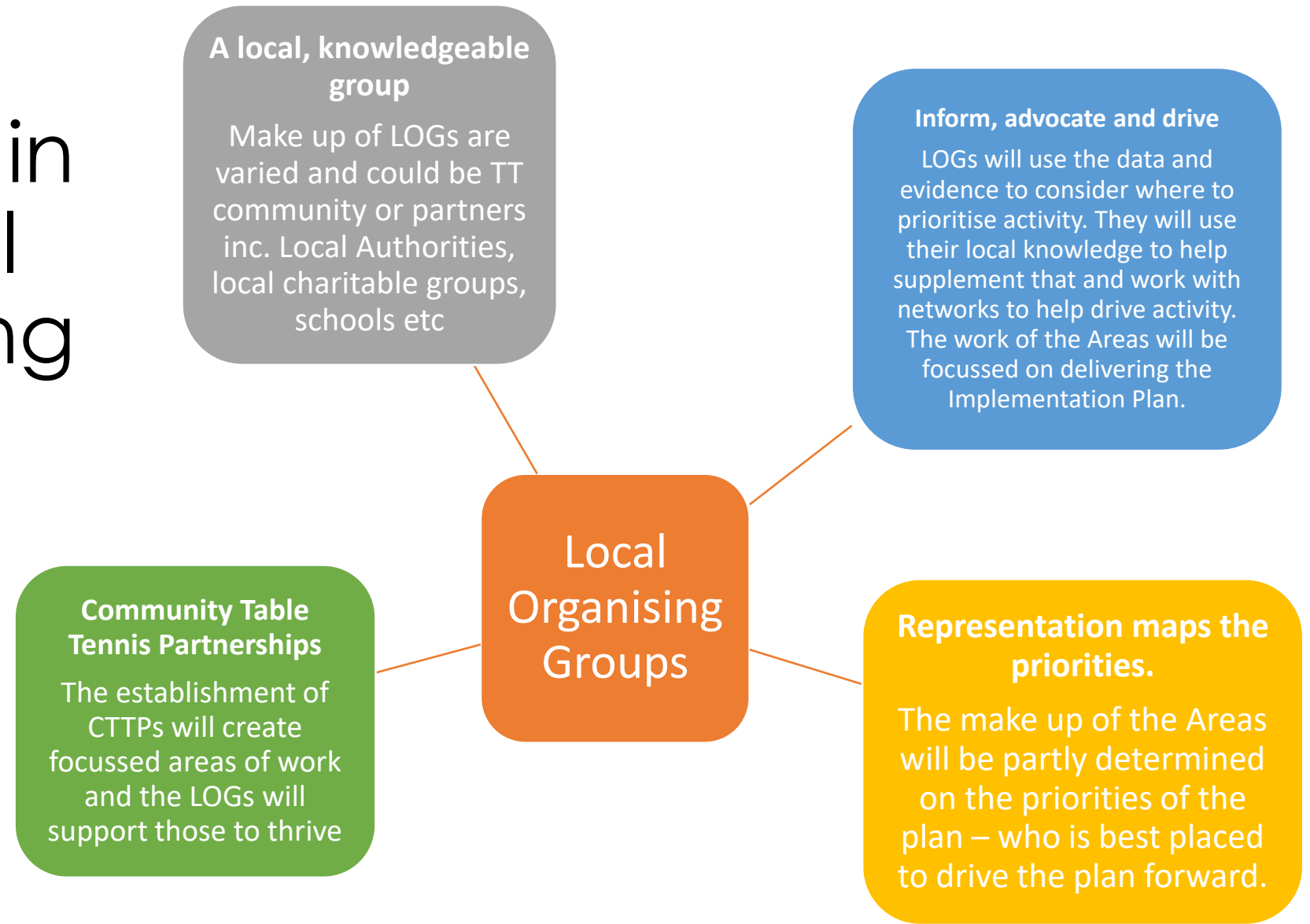
E.g.

Key Result – All participation activity will be focussed on primary aged young people and integrated into a club

Success = 300 new primary aged young people now play table tennis regularly with a TTE membership representing 10 different clubs. 30 have been identified onto the Pathway programme

IMPACT IS KEY!

What is involved in the Local Organising Group?



Work carried out to date

All 7 Area Managers and the Senior Area Manager are now in place

Work by Area Managers has started to detail their Areas and what they look like. This will inform the Area Delivery Plans

The budget for the Area work is set for 2023/2024. This is made up of an expenditure budget and income target for partner investment

Advert recruiting the Area Chairs is now out – the aim is to recruit 7 Chairs

Work in the Pipeline

Form the rest of the Local Organising Group once Chairs are appointed

Complete Area mapping work to inform the Local Delivery Plan

Develop the Local Delivery Plans, supported by the Local Organising Group

Develop regular communication pieces for the table tennis community including clubs, leagues, counties and within the internal Governance structure at Table Tennis England, to update on progress

Meanwhile.....

- The Area team along with the wider Development team will work on the priorities set within the Implementation Plan.
- Support clubs, leagues and volunteers to ensure there is a strong infrastructure locally.
- Be focussed in their work – limited resources so focus will be needed to make the biggest impact
- Build relationships and establish local partnerships to help us go faster



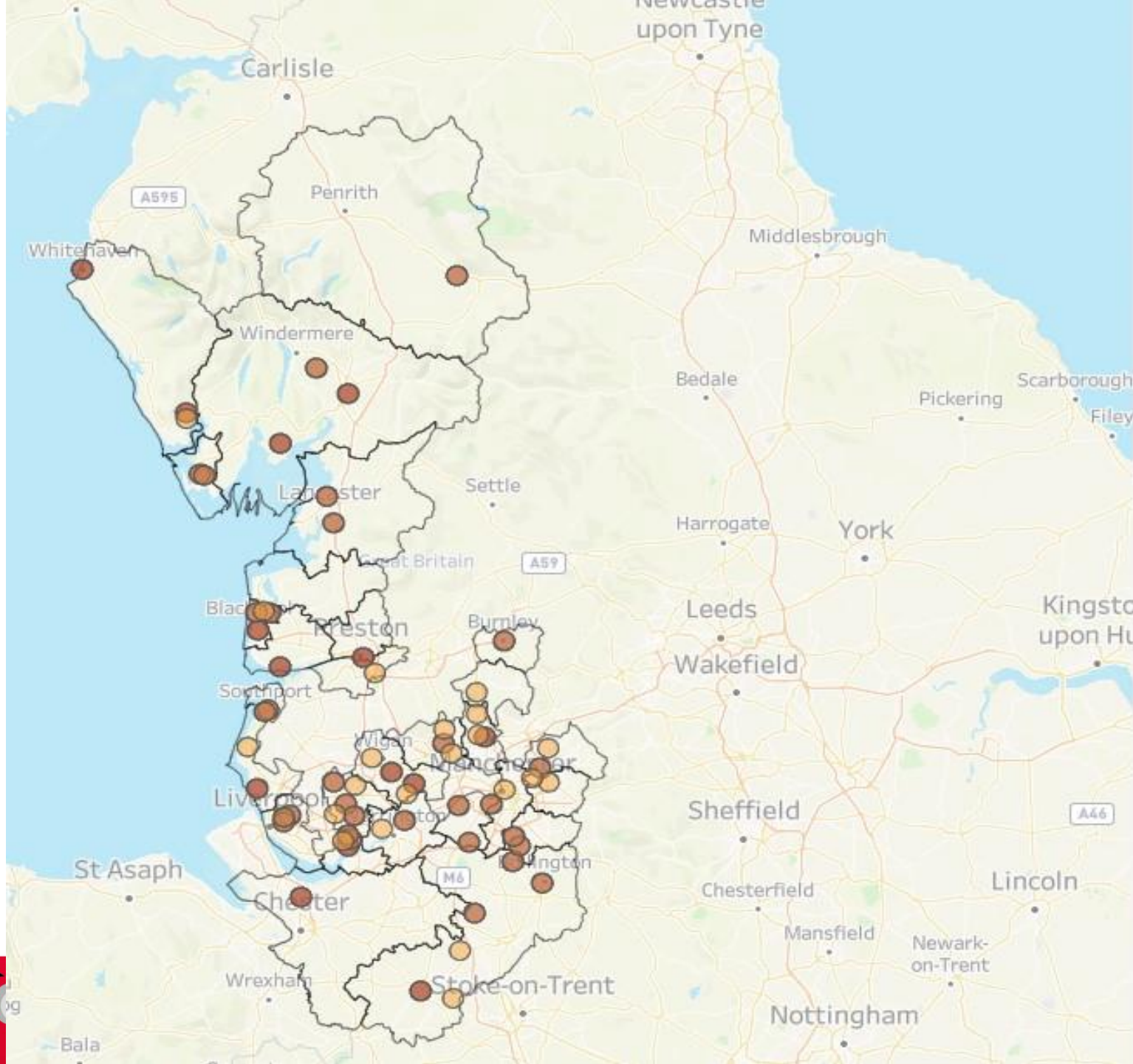
Mapping Tools – How we find our priorities



tabletennisengland.co.uk

Mapping

North West Area (clubs and L2 coaches)



TTE Areas

North West

County

(All)

Local Authority

(All)

Business data

(Multiple values)

Show Heat Layout





Local Authority

COMMENTS:

- **Dots** on the map represent postcodes of selected business data
- **Heat layout** on the map represent Local Authority of selected business data

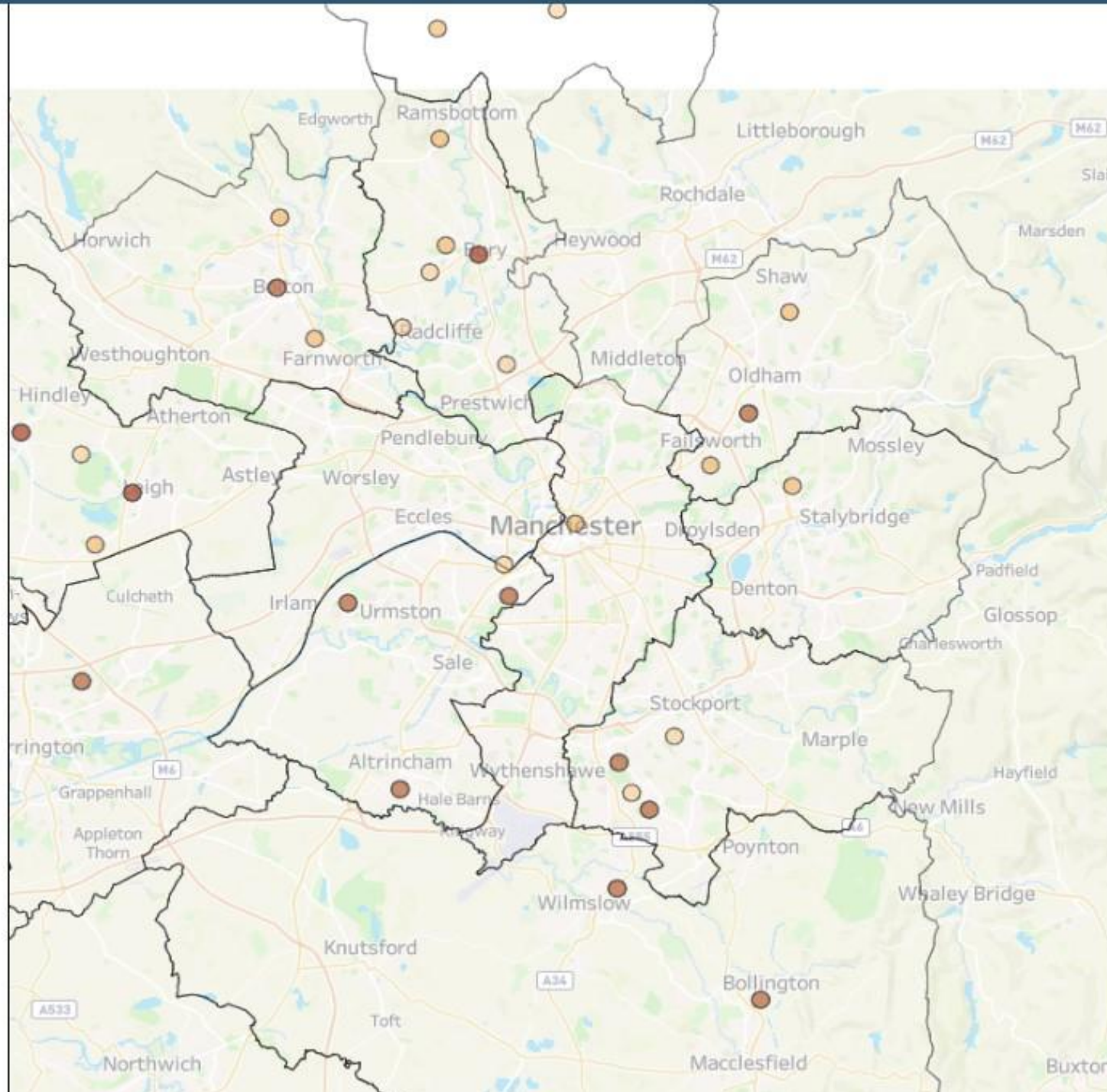
Click on the Business data key below in order to highlight it on a map

Business Data Key

-  Lic Coach - L2
-  Associate Club
-  Premier Club
-  Affiliated Clubs

Mapping

Greater Manchester
(clubs and coaches)



England

Region
(All)

TTE Areas
North West

County
(All)

Local Authority
(All)

Business data
(Multiple values)

Show Heat Layout
Local Authority

COMMENTS:

- Dots on the map represent postcodes of selected business data
- Heat layout on the map represent Local Authority of selected business data

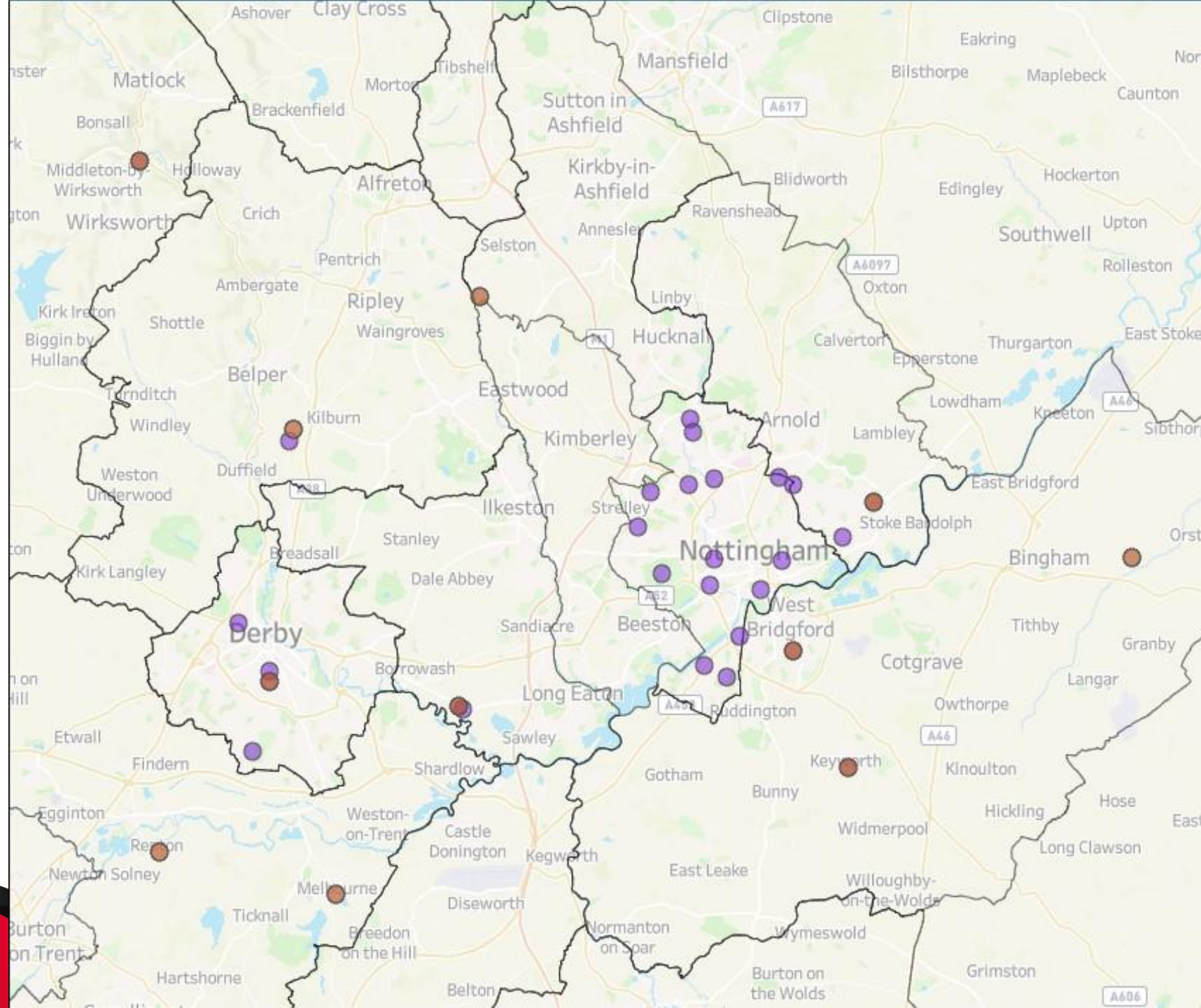
Click on the Business data key below in order to highlight it on a map

- Business Data Key
- Lic Coach - L1
 - Lic Coach - L2
 - Associate Club
 - Premier Club
 - Affiliated Clubs



Mapping

West/East Area
(clubs and outdoor tables)



Region

(All)

TTE Areas

(Multiple values)

County

(All)

Local Authority

(All)

Business data

(Multiple values)

Show Heat Layout

Local Authority

COMMENTS:

- **Dots** on the map represent postcodes of selected business data
- **Heat layout** on the map represent Local Authority of selected business data

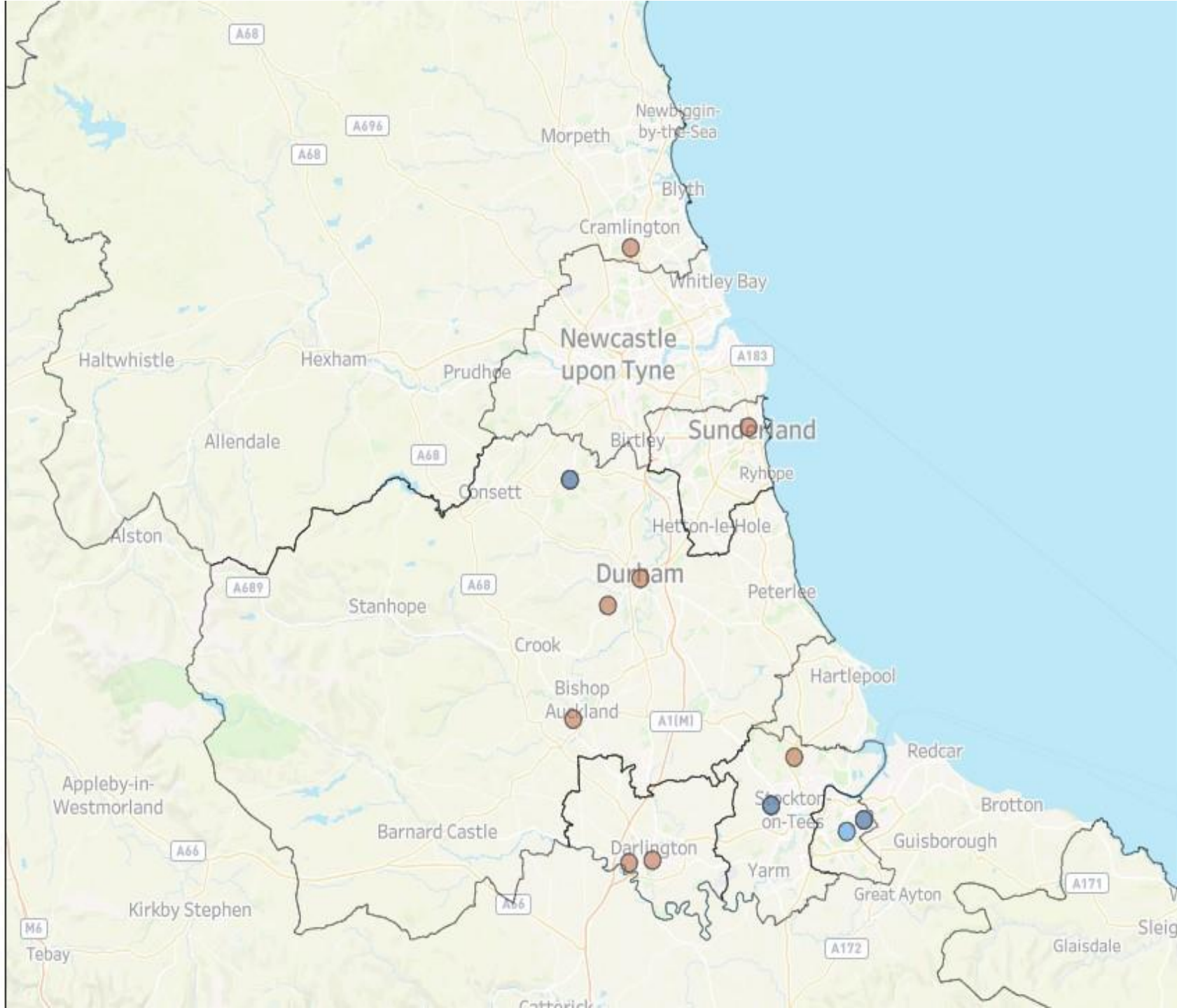
Click on the Business data key below in order to highlight it on a map

Business Data Key

- Associate Club
- Premier Club
- Affiliated Clubs
- Public Tables

Mapping

North East Area
(Premier clubs
and TT Kidz
projects)



Country

England

Region

(All)

TTE Areas

North East

County

(All)

Local Authority

(All)

Business data

(Multiple values)

Show Heat Layout

Local Authority

COMMENTS:

- **Dots** on the map represent postcodes of selected business data
- **Heat layout** on the map represent Local Authority of selected business data

Click on the Business data key below in order to highlight it on a map

Business Data Key

■ TT Kidz Projects - Live

■ Premier Club